



## **V4/V4I    User Manual**

---

V4.....page1-6

V4I.....page7-12



**BT Interphone**

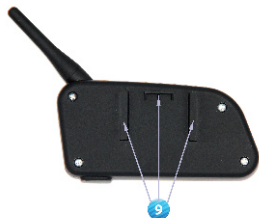
**Bluetooth™**



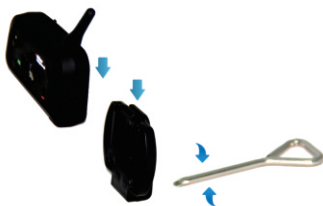
# V4

## **Key spec.**

Full duplex motorcycle intercom among four riders at the same time Up to 1,200m bluetooth distance,Auto-receiving mobile phone calls,National level 5 waterproof standard,MP3/GPS/mobile Up to,8 hours talk time,FM radio function



- 1: Power on
- 2: Power off
- 3:Volume +
- 4:Volume -
- 5: FM radio on/off
- 6:Rider A
- 7: Rider B
- 8: Snap joint
- 9:Plug



Installation instruction



Find a proper location to fix the clamp



Install bluetooth interphone  
onto the clamp under instruction



Finished installation



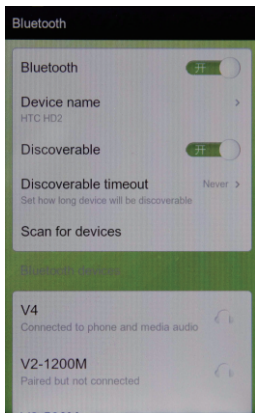
Earphone line connecting  
instruction



Power on: press the power on button, approx. 2s, until red light and then blue light flash



Pair with bluetooth equipment instuction



Pairing with cellphone/MP3/GPS, after power on,press key 1 about 3-5 s, with red and blue flash light, open the cellphone/MP3/GPS bluetooth function,when searching, see left photo, press connecting, pairing successful when red flash off, blue light flash rhythmically.

FM function: V4 power on, with earphone, press FM key for 3s.



Pairing with the other V4, each equipment has power on

- 1) Press key Rider A at the same time for 3-5s, till the red and blue light flash alternately.
- 2) Press either equipment key Rider A, till red light off, blue light flash, at the searching situation. after 5-7s, the other equipment red light off, blue light flash. pairing successful
- 3) Press either equipment key Rider A, can talk with each other



4 parties pairing:

- 1) Equipment 1 and 2 as pairs, 3 and 4 as pairs, and make them pairing as model A.
- 2) Choose 2 and 3 pairs as model B, press the key Rider B for 3-5s, till the red and blue light flash alternately. press either key Rider B of equipment 2 or 3, till red light off, blue light flash, mean at the searching situation. after 5-7s, the other equipment red light off, blue light flash. connecting successful, press either key Rider B, equipment 2 and 3 pairing successful.
- 3) Press key Rider A of equipment 1 or 4, four riders connecting, can talk to each other
- 4) Equipment 1 and 4 press Rider B till red and blue flash alternately, equipment 1 and 4 connect to cellphone. (phone connecting, refer to last page)

(PS: cancel the pairing of V4: press any one of the 4 equipment Rider A and Rider B after 3s, red and blue flash alternately, connecting cancellation)

Remark: when phone call, auto-receiving priority, and will back to 4 - riders talking model after phone call finish, also automatically.

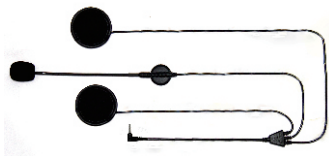
## Four V4 pairing instruction



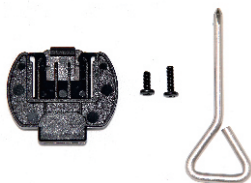
## Accessories



USB charger lead



Earphone



Clamp connected and installed unit



AC&USB charger



**BT** *BT Interphone*

 **Bluetooth™**



# V4I

## Key spec.

Full duplex motorcycle intercom among four riders at the same time Up to 1,200m bluetooth distance, Auto-receiving mobile phone calls, National level 5 waterproof standard, MP3/GPS/ mobile Up to 8 hours talk time



- 1: Power on/off
- 2: Volume +
- 3: Volume -
- 4: Rider A
- 5: Rider B
- 6: Snap joint
- 7: Plug



Installation instruction



Find a proper location to fix the clamp



Install bluetooth interphone  
onto the clamp under instruction



Finished installation



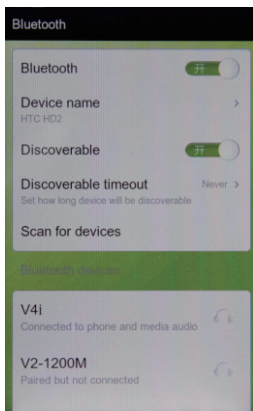
Earphone line connecting instruction



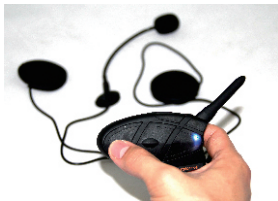
Power on: press the power on button, approx. 2s, until red light, and then blue light flash



Power off: Press power on/off key for 5-7s, red light flash, power off



Pairing with cellphone/MP3/GPS, after power on, press key 1 about 3-5s, with red and blue light flash alternately, open the cellphone/MP3/GPS bluetooth function, when searching, see left photo, press connecting, pairing successful when red light off, blue light flash rhythmically.



Pairing with the other V4I, each equipment has power on,

- 1) Press key Rider A at the same time for 3-5s, till the red and blue light flash alternately.
- 2) Press either equipment key Rider A, till red light off, blue light flash, at the searching situation. after 5-7s, the other equipment red light off, blue light flash. pairing successful.
- 3) Press either equipment key Rider A, can talk with each other



4 parties pairing:

- 1) Equipment 1 and 2 as pairs, 3 and 4 as pairs, and make them pairing as model A.
- 2) Choose 2 and 3 pairs as model B, press key rider B for 3-5s, till the red and blue light flash alternately. press either key Rider B of equipment 2 or 3, till red light off, blue light flash, mean at the searching situation. after 5-7s, the other equipment red light off, blue light flash. connecting successful, press either key Rider B, equipment 2 and 3 pairing successful.
- 3) Press key Rider A of equipment 1 or 4, four riders connecting, can talk to each other
- 4) Equipment 1 and 4 press Rider B till red and blue flash alternately, equipment 1 and 4 connect to cellphone. (connecting to phone, refer to last page)

(PS: cancel the pairing of V4I: press Rider A and Rider B at the same time of the same equipment, after 3s, red and blue light flash alternately, connecting cancellation)

Remark: when phone call, auto-receiving priority, and will back to 4 riders talking model after phone call finish, also automatically.

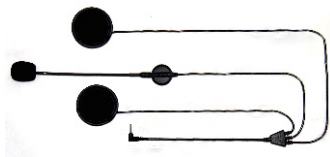
## Four V4I pairing instnction



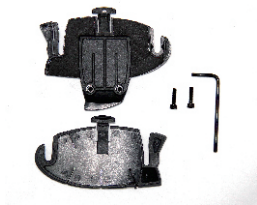
## Accessories



USB charger lead



Earphone



Clamp connected and installed unit



AC&USB charger



